



# Dry Erase Surface

## Recommended Surfaces

Painted dry wall, glass, painted steel, finished wood, whiteboards and chalk boards.

## Safety and Usage Information:

**CAUTION:** To reduce the risks associated with sharp edges, use caution when handling, cutting and installing the product.

**NOTICE:** Not recommended for use on cinder block, brick, wallpaper, fabric, heavily textured, or delicate surfaces. Pulling the product away from the wall in a fast or aggressive motion may result in product or surface damage. Writing or erasing marker dust off of the product and onto the wall may result in staining. Use of markers, pens or other writing instruments which are not specified as dry erase may result in damage to the product. Clean surface with water or a dry erase cleaning solution as needed.

## Surface Preparation:

For quality results, surfaces to be covered must be clean, smooth, dry, and structurally sound – must not contain loose paint, nail heads, nicks, gouges or other surface imperfections. If walls have been recently painted, allow paint to cure according to paint instructions before applying the Post-it® Dry Erase Surface.

## Cutting the Surface:

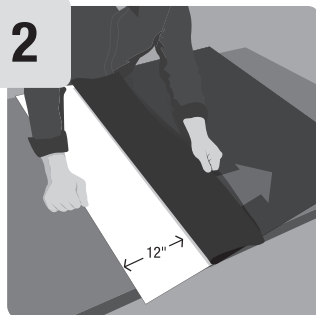
The Post-it® Dry Erase Surface can be cut to size using a variety of cutting tools including scissors, box cutters or utility knives. Always confirm the size of the area you wish to cover, measure the surface twice before cutting and use a straight edge, such as a ruler, to ensure a square cut. Take caution when handling the edges of the surface as they may be sharp.

## Standard Installation:

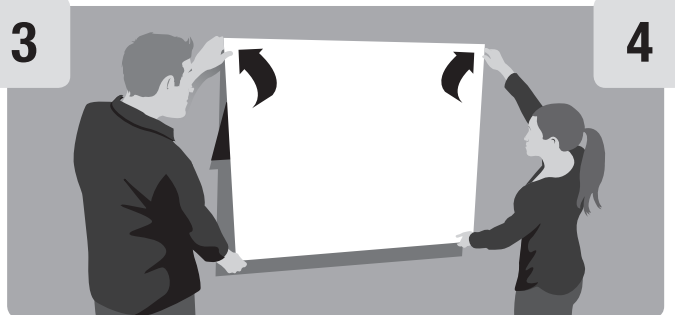
Though no tools are required, we recommend the use of a pencil and measuring device to help with proper alignment.



1 Unroll on a flat, clean work surface.



2 Remove 12" of the black liner from the top edge.



3 With the help of a friend, keep the surface tight and align the surface to the wall.

4 Press firmly on corners and top edge to secure the surface to the wall. Recheck alignment and adjust if needed.



5 Using the cloth provided, start in the middle and push firmly against the surface moving any air bubbles to the edge.



6 Continue to remove the liner 12" at a time and repeat step 5 until the surface is completely secured to the wall without air bubbles.



7 Recycle the liner and dry erase surface box.

## Installing Over Existing Boards:

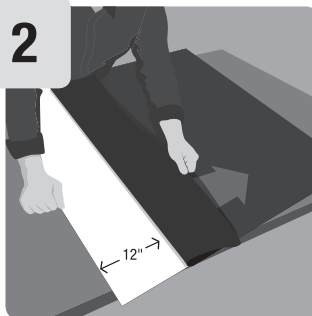
The Post-it® Dry Erase Surface can be used to resurface existing whiteboards or chalk boards for a new, pristine writing surface. Due to variability in sizes in the marketplace, you may be required to trim the surface during the installation process to ensure full coverage.

1



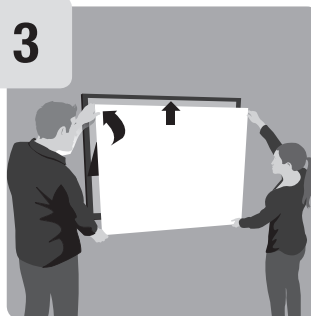
Unroll on a flat, clean work surface.

2



Remove 12" of the black liner from the top edge.

3



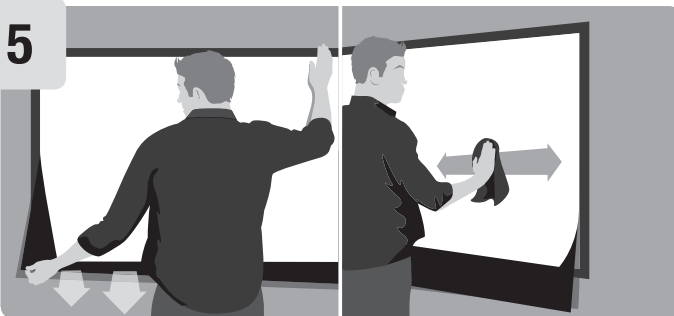
With the help of a friend, tightly align the left corner and top edge of the surface to the inside edge of the frame and press firmly using the cloth provided.

4



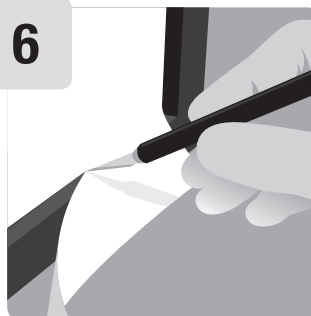
Continue pushing firmly against the surface moving any air bubbles to the right edge while maintaining tight alignment to the inside edge of the frame. If surface overlaps the frame of the board, press surface firmly against the board surface and into the edge of the frame.

5



Continue to remove the liner 12" at a time and repeat the smoothing motion in step 4 until the surface completely covers the board surface without bubbles.

6



Using the frame as a guide, trim excess film using a utility knife.

7



Recycle the liner and dry erase surface box.

## Product Removal:

To remove the surface, select a corner and **peel slowly and smoothly** away from the wall. For best results, gently pull away at a 180 degree angle.

## Warranty Information:

### Limited Warranty

This 3M product will be free from defects in material and manufacture. If this 3M product is defective, your exclusive remedy shall be, at 3M's option, replacement or repair of the 3M product or refund of the purchase price of the 3M product. This warranty gives you specific legal rights, and you may have other rights that may vary from state to state or country to country. To obtain warranty service, contact 3M at the address listed on the product package.

### Limitation of Liability

3M will not be liable for any loss or damage arising from this 3M product, whether direct, indirect, special, incidental or consequential. Some states and countries do not allow the exclusion or limitation of incidental or consequential damages, so the above limitation or exclusion may not apply to you.